

**MINUTES**  
**CITY COUNCIL SPECIAL CALLED MEETING**  
**G.L. Gilleland Council Chambers on 2<sup>nd</sup> Floor**  
**Thursday, September 19, 2024**  
**8:00 A.M.**

1. **CALL TO ORDER:** Mayor Walden called the meeting to order at 8:00 a.m.
2. **ROLL CALL:** Present were Councilmember William Illg, Councilmember Sandy Sawyer, Councilmember Mark French, Councilmember Caleb Phillips, City Attorney Kevin Tallant, City Manager Bob Bolz, City Clerk Beverly Banister, Public Works Director Trampas Hansard, Finance Director Robin Gazaway, Downtown Development Director Amanda Edmondson and Planning Director Ron Haynie.
3. **INVOCATION AND PLEDGE:** Invocation and pledge were led by Councilmember Illg.
4. **APPROVAL OF THE AGENDA:** Motion to approve the agenda as presented made by M. French; second by W. Illg. Vote carried unanimously in favor.
5. **PUBLIC INPUT:** None
6. **CONDISERATION OF FINAL PLAT FOR THE VILLAGE AT MAPLE STREET:** Motion to approve the final plat for the Village at Maple Street as presented made by M. French; second by W. Illg. Councilmember Illg stated he did not support the development initially and still does not like the idea of it, however since the Council is passed the decision process, he wants to clarify they are only approving the final plat, not the development. Vote carried three in favor (French, Illg, Sawyer) with one recused (Phillips). (Exhibit "A")
7. **ADJOURNMENT:** Motion to adjourn the meeting at 8:04 a.m. made by S. Sawyer; second by C. Phillips. Vote carried unanimously in favor.

***Approved this 30<sup>th</sup> day of September 2024***

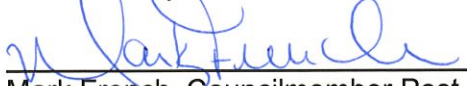
By: CITY OF DAWSONVILLE


  
\_\_\_\_\_  
John Walden, Mayor

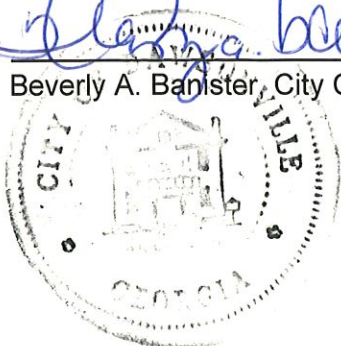
  
\_\_\_\_\_  
Caleb Phillips, Councilmember Post 1

  
\_\_\_\_\_  
William Illg, Councilmember Post 2

  
\_\_\_\_\_  
Sandra Sawyer, Councilmember Post 3

  
\_\_\_\_\_  
Mark French, Councilmember Post 4

Attest:   
\_\_\_\_\_  
Beverly A. Banister, City Clerk







**COOK**  
 3120 FRONTAGE ROAD  
 GAINESVILLE, GA 30604  
 WWW.COOKENGINEERS.COM  
 P.L.F. #007243

PREPARED FOR:  
**HIAWASSEE LAND PARTNERS, LLC**  
 3120 FRONTAGE RD.  
 GAINESVILLE, GA 30604  
 24-HR. CONTACT:  
**GEOFF COOK**  
 (878) 207-1509

PROJECT NAME:  
**THE VILLAGE AT MAPLE STREET**

TASK:  
**FINAL PLAN**

PROJECT INFORMATION:  
 THE VILLAGE AT MAPLE STREET  
 24-HR.  
 PROJECT NUMBER:  
 MAPLE STREET  
 PROJECT ADDRESS:  
 444  
 LANE OF ROAD:  
 50' R/W

CITY: GAINESVILLE  
 COUNTY: GWINNETT  
 DISTRICT: 10

PLAN REVISION

NO.	DATE	DESCRIPTION
1	9/1/14	ISSUE FOR PERMITS
2		
3		
4		



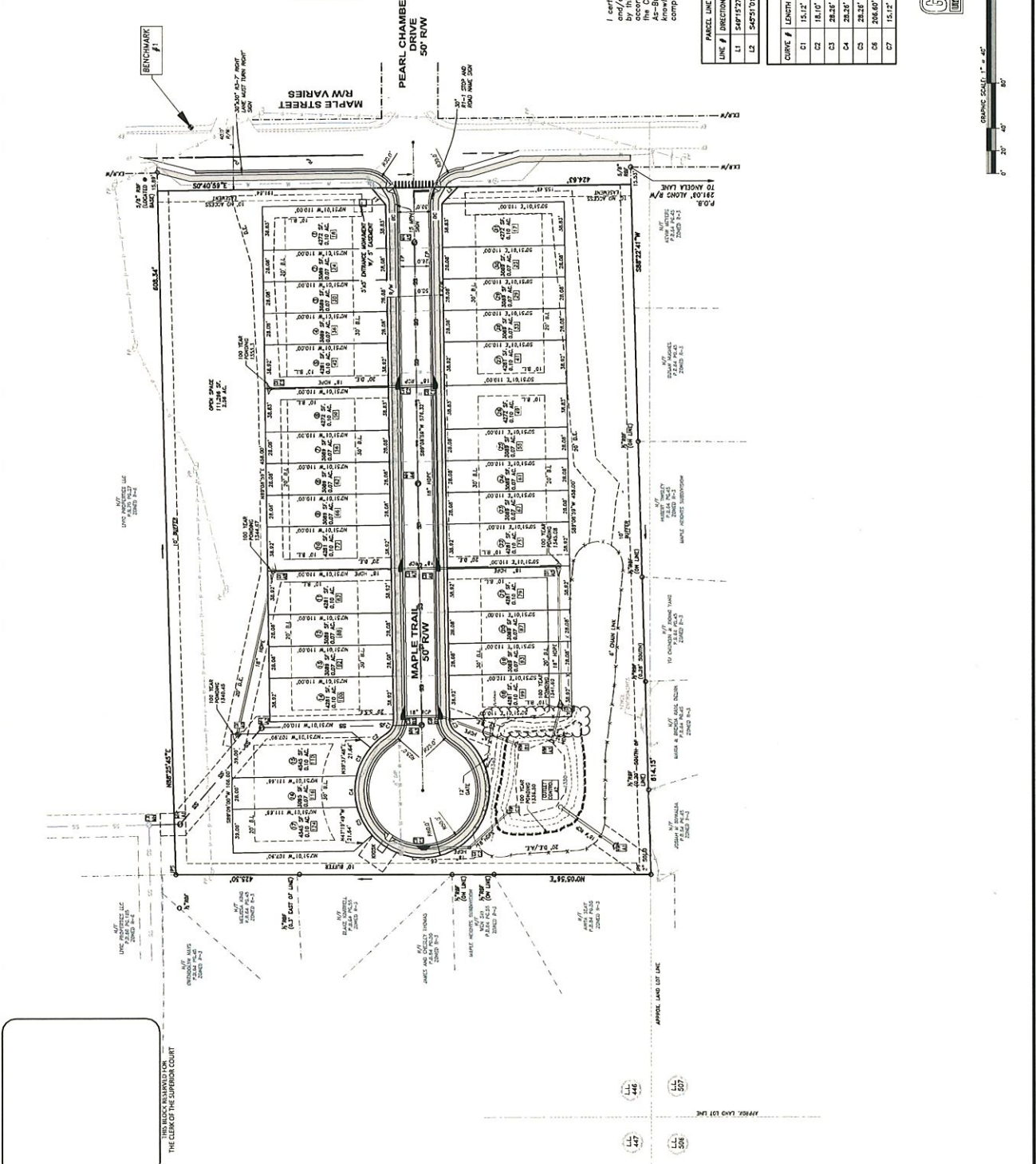
2 of 2

CW: AS-DRAWN  
 REVISION: SCALE  
 DATE: PROJECT NO.

**LEGEND**

1. ALL DIMENSIONS UNLESS OTHERWISE NOTED.  
 2. ALL DIMENSIONS TO CENTERLINE UNLESS OTHERWISE NOTED.  
 3. ALL DIMENSIONS TO FACE UNLESS OTHERWISE NOTED.  
 4. ALL DIMENSIONS TO CENTERLINE UNLESS OTHERWISE NOTED.  
 5. ALL DIMENSIONS TO FACE UNLESS OTHERWISE NOTED.  
 6. ALL DIMENSIONS TO CENTERLINE UNLESS OTHERWISE NOTED.  
 7. ALL DIMENSIONS TO FACE UNLESS OTHERWISE NOTED.  
 8. ALL DIMENSIONS TO CENTERLINE UNLESS OTHERWISE NOTED.  
 9. ALL DIMENSIONS TO FACE UNLESS OTHERWISE NOTED.  
 10. ALL DIMENSIONS TO CENTERLINE UNLESS OTHERWISE NOTED.  
 11. ALL DIMENSIONS TO FACE UNLESS OTHERWISE NOTED.  
 12. ALL DIMENSIONS TO CENTERLINE UNLESS OTHERWISE NOTED.  
 13. ALL DIMENSIONS TO FACE UNLESS OTHERWISE NOTED.  
 14. ALL DIMENSIONS TO CENTERLINE UNLESS OTHERWISE NOTED.  
 15. ALL DIMENSIONS TO FACE UNLESS OTHERWISE NOTED.  
 16. ALL DIMENSIONS TO CENTERLINE UNLESS OTHERWISE NOTED.  
 17. ALL DIMENSIONS TO FACE UNLESS OTHERWISE NOTED.  
 18. ALL DIMENSIONS TO CENTERLINE UNLESS OTHERWISE NOTED.  
 19. ALL DIMENSIONS TO FACE UNLESS OTHERWISE NOTED.  
 20. ALL DIMENSIONS TO CENTERLINE UNLESS OTHERWISE NOTED.  
 21. ALL DIMENSIONS TO FACE UNLESS OTHERWISE NOTED.  
 22. ALL DIMENSIONS TO CENTERLINE UNLESS OTHERWISE NOTED.  
 23. ALL DIMENSIONS TO FACE UNLESS OTHERWISE NOTED.  
 24. ALL DIMENSIONS TO CENTERLINE UNLESS OTHERWISE NOTED.  
 25. ALL DIMENSIONS TO FACE UNLESS OTHERWISE NOTED.  
 26. ALL DIMENSIONS TO CENTERLINE UNLESS OTHERWISE NOTED.  
 27. ALL DIMENSIONS TO FACE UNLESS OTHERWISE NOTED.  
 28. ALL DIMENSIONS TO CENTERLINE UNLESS OTHERWISE NOTED.  
 29. ALL DIMENSIONS TO FACE UNLESS OTHERWISE NOTED.  
 30. ALL DIMENSIONS TO CENTERLINE UNLESS OTHERWISE NOTED.  
 31. ALL DIMENSIONS TO FACE UNLESS OTHERWISE NOTED.  
 32. ALL DIMENSIONS TO CENTERLINE UNLESS OTHERWISE NOTED.  
 33. ALL DIMENSIONS TO FACE UNLESS OTHERWISE NOTED.  
 34. ALL DIMENSIONS TO CENTERLINE UNLESS OTHERWISE NOTED.  
 35. ALL DIMENSIONS TO FACE UNLESS OTHERWISE NOTED.  
 36. ALL DIMENSIONS TO CENTERLINE UNLESS OTHERWISE NOTED.  
 37. ALL DIMENSIONS TO FACE UNLESS OTHERWISE NOTED.  
 38. ALL DIMENSIONS TO CENTERLINE UNLESS OTHERWISE NOTED.  
 39. ALL DIMENSIONS TO FACE UNLESS OTHERWISE NOTED.  
 40. ALL DIMENSIONS TO CENTERLINE UNLESS OTHERWISE NOTED.  
 41. ALL DIMENSIONS TO FACE UNLESS OTHERWISE NOTED.  
 42. ALL DIMENSIONS TO CENTERLINE UNLESS OTHERWISE NOTED.  
 43. ALL DIMENSIONS TO FACE UNLESS OTHERWISE NOTED.  
 44. ALL DIMENSIONS TO CENTERLINE UNLESS OTHERWISE NOTED.  
 45. ALL DIMENSIONS TO FACE UNLESS OTHERWISE NOTED.  
 46. ALL DIMENSIONS TO CENTERLINE UNLESS OTHERWISE NOTED.  
 47. ALL DIMENSIONS TO FACE UNLESS OTHERWISE NOTED.  
 48. ALL DIMENSIONS TO CENTERLINE UNLESS OTHERWISE NOTED.  
 49. ALL DIMENSIONS TO FACE UNLESS OTHERWISE NOTED.  
 50. ALL DIMENSIONS TO CENTERLINE UNLESS OTHERWISE NOTED.

BENCHMARK 1  
 DESCRIPTION: BK NAIL  
 NORTHING: 1605708.6780  
 EASTING: 2309930.4960  
 ELEVATION: 7392.11



PARCEL LINE TABLE

LINE #	DIRECTION	LENGTH
L1	S48°19'57"W	18.54'
L2	S45°51'01"E	20.85'

CHORD TABLE

CHORD #	LENGTH	BEARING	CHORD DIRECTION	CHORD LENGTH
C1	15.12'	N15°07'56"W	N15°07'56"W	14.49'
C2	15.10'	N44°43'32"W	N44°43'32"W	18.04'
C3	28.25'	N82°51'48"W	N82°51'48"W	28.00'
C4	28.25'	S82°09'47"W	S82°09'47"W	28.00'
C5	28.25'	N82°09'47"W	N82°09'47"W	28.00'
C6	208.60'	S47°58'29"E	S47°58'29"E	118.64'
C7	15.12'	N67°15'55"E	N67°15'55"E	14.49'

I certify that the water distribution system and/or sanitary sewerage system depicted in this As-Built Drawing was constructed in accordance with the approved plans for this site. The information submitted on this As-Built Drawing is to the best of my knowledge and belief, true, accurate and complete.

3/16/14

GEORGIA ENGINEERING CONSTRUCTION BOARD  
 PROFESSIONAL ENGINEER  
 GEOFF COOK  
 LICENSE NO. 21614

GRAPHIC SCALE: 1" = 40'

Exhibit "A"